



MMR MULTI MEDIA READER W/SKIMGARD™ CONTACTLESS EMV MOBILE DEVICES MAG STRIPE CARDS

Multi Media Reader

Part#: 200-10095

Parabit's Multi Media Reader (**MMR**) is designed to interact with Near Field Communication (NFC). The **MMR** will work with Contactless EMV Cards, Mobile Devices, as well as Magnetic Stripe Cards.

Contactless EMV Cards:

Parabit's **MMR** utilizes 14443 A&B NFC communication protocols to interact with Contactless EMV Cards.

Mobile Devices:

Parabit's **MMR** works seamlessly with iOS and Android platforms. Mobile Devices need to have NFC chip set, have NFC communication ENABLED, and have the phone powered on and unlocked. There is NO SPECIFIC APP REQUIRED to use the **MMR**, as it interfaces at the hardware level. The **MMR** does not interface/interact at the application level on Mobile Devices – it only interfaces/interacts at the pre-activation levels. The **MMR** does not initiate any financial transaction.

Magnetic Stripe Cards:

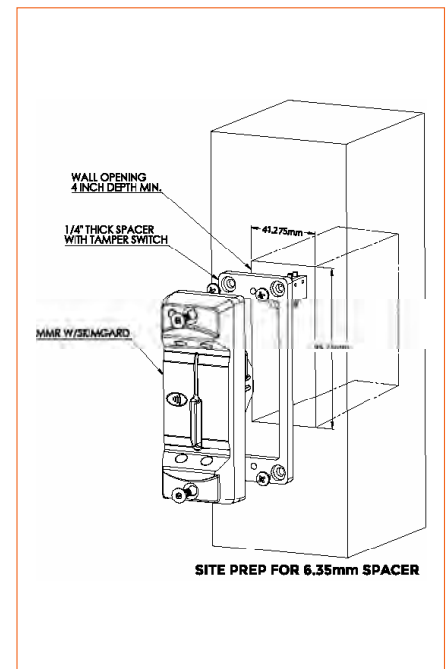
The **MMR** will also work with Debit/Credit Card Only Magnetic Stripe cards, or Bank ISO Encoded Magnetic Stripe ATM Cards with NYCE BIN Exception Lookup, or Card Number Look up/Exact Match (Card Number Table Lookup).

Beacon Technology:

The **BLE** (Bluetooth Low Energy) Beacon transmits periodically an ID number that can be recognized by smartphones with Bluetooth enabled. Using a Parabit provided SDK (Software Development Kit) clients (banks) will be able to customize their apps to trigger actions such as access control as well as various promotional messaging.

The **ACS-1E** ATM Lobby Card Access Control System provides reliable Track 2 Magnetic Stripe access control to your ATM Lobby/Vestibule or Night Drop. An embedded Ethernet port or optional Modem card supports remote panel management via optional ACS Enterprise Software, supporting thousands of panels from multiple help desks within your network.

The base ACS-1E system also supports the expansion to optional; 2nd Card Reader, 4 Port I/O Adapter. The ACS-1E supports easy integration into any Alarm Panel (UTC's MASTermind), Video Recording System, ATM or any other device with inputs/outputs.



SKIMMING DETECTION: The MMR contains Parabit's patented *SkimGard™* technology to detect most card reader skimming attempts as well as RFID reader skimming detection.



System Features:

- Base Controller supports one (1) Entrance. (2nd entrance w/ optional 2nd Card Reader Board)
- Embedded Ethernet and Optional Modem Board
- PCI Compliant Activity and System Audit Trails maintained in EEPROM
- Suspicious Card Used Notification
- Bootloader Supports Remote Firmware Updates via Ethernet
- 2-Aux. SPDT Form "C" Outputs for Alarm, DVR, NVR, ATM & Door Assist Opener Integration and 4 Port I/O Board
- Controller Panel Door Supervision
- Accept File Capacity: 10,000 / 6 - Digit Entries per Entrance Reader expandable to 30,000 entries per entrance w/optional 512k EEPROM option
- Programmable (NO/NC) Egress, Door Open and Door Supervision Inputs
- Access Schedule w/ 6 state changes per each weekday (Open/Card Lock) for each Entrance Reader w/30 programmable Holidays/ Special days
- Battery Backed Real-Time Clock w/ DST & Time Zone Settings
- DC Piezo Output Support per Card Reader
- Battery Life Supervision w/ Low Battery Notification
- 3 Selectable Reader Modes of Operation per Reader:
 - Any Magnetic Stripe
 - Bank ISO Encoded ATM/Credit/Debit Card with NYCE BIN Exception Table Lookup
 - Card Number Match: 4 - 21 digits in length (Night Drop Support)

ACS-1E Readers

ACS-1E Insert Reader w/Serial#, Cable Cut & Tamper Supervision
Part # 200-10143

Features:

- Flush Mount Design
- Interior or Exterior Use
- Anodized Aluminum Bezel, Stainless Steel Casing
- Weather Resistant Design



ACS-1E Swipe Reader w/Serial#, Cable Cut & Tamper Supervision w/Piezo
Part # 200-10142

Features:

- Surface Mount Design
- Interior or Exterior Use
- Brushed Stainless Steel Cover
- Weather Resistant Design



SkimGard™ Insert Reader w/Overlay, Serial#, Cable Cut & Tamper Supervision
Part # 200-10092

Features:

- Flush Mount Design
- Stainless Steel Casing
- Weather Resistant Design
- Black Anodized



MMR Contactless EMV/Mobile Device & Magnetic Stripe Card Reader w/ SkimGard™

Part#: 200-10095

Features:

- Flush Mount Design
- Weather Resistant Design
- Black High Impact Polycarbonate Bezel

MMR Contactless EMV/ NFC Card/Mobile Device & Magnetic Stripe Card Reader w Beacon/ SkimGard™

MMR w/ SkimGard™ Beacon Technology

Part # 200-10095-BT



MMR Contactless EMV/Mobile Device & Magnetic Stripe Card Reader w/ SkimGard™ Upgrade Kit

Part#: 200-20050

Kit Includes:

- **MMR** Contactless EMV/NFC/Mag Stripe READER w/ **SkimGard™** Black (Part# 200-10095)
- **SkimGard™** Power Booster PCB (Part# 200-10205)
- Decal Set - 2 Horizontal & 2 Vertical Decals (Part# 200-10198 - Not Shown)

MMR w/ Beacon & SkimGard™ Technology Upgrade Kit

Part#: 200-20050-BT



MMR Contactless EMV/Mobile Device Card Reader w/ SkimGard™

Part#: 200-10109

- 44.67 w x 121.92 h x 20.65 d mm

MMR w/ SkimGard™ Beacon Technology

Part # 200-10109-BT

Features:

- Flush Mount Design
- Weather Resistant Design
- Black High Impact Polycarbonate Bezel



 **COMING FALL 2017**

ATM Lobby Card Access Control

Ethernet Kit Includes:

Standard Ethernet Base Kits:

Single Door System, **ACS-1E-ETH** Controller with Main PCB w/ Ethernet Firmware (**Part# 200-10126**), 9VDC Controller Power Supply (**Part# 200-10139**), Override Toggle Switch (**Part# 200-10001**), Horizontal/Vertical Reader Mount Decal Set and 50 ft. Card Reader Cable (**Part# 200-10138**)



Part# 200-20040
w/*SkimGard™* Reader

Part# 200-20047
w/UL Control Box &
w/*SkimGard™* Reader

Part# 200-20044
w/ACS-1E Insert Reader

Part# 200-20066
w/UL Control Box &
w/ACS-1E Insert Reader

Part# 200-20043
w/ACS-1E Swipe Reader

Part# 200-20065
w/UL Control Box &
w/ACS-1E Swipe Reader

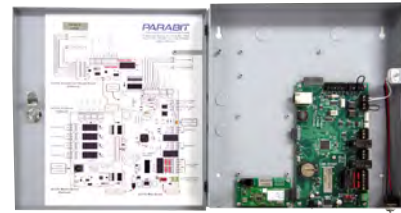
Part# 200-20070
w/Multi Media Reader **MMR** w/*SkimGard™*

Part# 200-20073
w/UL Control Box & w/Multi Media Reader **MMR**
w/*SkimGard™*

Modem Kit Includes:

Standard Modem Base Kits:

Single Door System **ACS-1E-MOD** Controller with Main PCB w/ Modem Firmware (**Part# 200-10177**), Modem PCB (**Part# 200-10137**), 9VDC Controller Power Supply (**Part# 200-10139**) - Override Toggle Switch (**Part# 200-10001**), Horizontal/Vertical Reader Mount Decal Set and 50 ft. Card Reader Cable (**Part# 200-10138**)



Part# 200-20057
w/*SkimGard™* Reader

Part# 200-20062
w/UL Control Box &
w/*SkimGard™* Reader

Part# 200-20059
w/ACS-1E Insert Reader

Part# 200-20063
w/UL Control Box &
w/ACS-1E Insert Reader

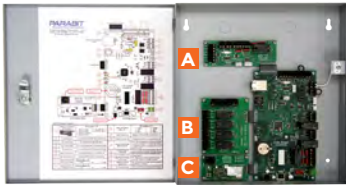
Part# 200-20058
w/ACS-1E Swipe Reader

Part# 200-20064
w/UL Control Box &
w/ACS-1E Swipe Reader

Part# 200-20071
w/Multi Media Reader **MMR** w/*SkimGard™*

Part# 200-20072
w/UL Control Box & w/Multi Media Reader **MMR**
w/*SkimGard™*

Base Kit Options:



A. Part# 200-10103

2nd Card Reader Board (Entrance) w/1- Egress Input, Door Contact Input and DPDT Form "C" Output

C. Part# 200-10137

Modem Board

B. Part# 200-10110

4 Port I/O Board - 4 – Programmable NO/NC Inputs and 4 - SPDT Form "C" Outputs 250 V @ 10A. Supports Integration to Alarm, DVR, NVR, ATM, Door Assist Opener, Light Sensor, Motion Sensor (Man Trap), Magnetic Bond Sensor and REX Motion hardware

Options for Collars with Tamper Switch

Part# 100-00137

- Flush Mount Collar w/Flange w/Tamper Switch for Insert Readers
- Size of opening required: 2" W x 4.5" H x 3.25" D
- Size of Cover Plate: 3" W x 6" H x 0.25" D



Part # 100-00116

- 2" Collar with Tamper for Insert Readers
- 6"H x 1.75" W x 2" D"
- Finish: Clear
- Available in Black (**Part# 100-00116B**)



Popular collar used on installations

Part # 100-00118

- 3" Collar with Tamper for Insert Readers w/ Side Mount Bracket
- Collar Size w/o Side Mount Bracket: 5-7/8" H x 1.75" W x 3" D
- Finish: Clear
- Available in Black (**Part# 100-00118B**)



Popular collar used on installations

Part# 100-00156

- 3" 45° Angle Collar for
- Overall size: 6.25"H x 2.125"W x 1.75"D
- Available in Black (**Part# 100-00156B**)



Part# 100-00260

- 22° Angle Collar
- Overall size: 6.25"H x 2.125"W x 1"D





Options for Collars with Tamper Switch

Part# 100-00211

- Extension Bracket for 3" Collar (Part# 100-00118)
- 10.75" w x 7" h x 3" d



Part # 100-00103

- 3" Dual Collar w/ Key-Switch support with Tamper for Insert Readers w/Side Mount Bracket
- 10.75" H x 1.75" W x 3" D
- Finish: Clear
- Available in Black (Part# 100-00103B)



Popular collar used on installations

Part# 100-00240

- 2" Collar w/ Tamper Switch
- 2" w x 120" h x 2" d
- Clear Finish
- Available in Black Finish (Part# 100-00246)



Part# 100-00212

- 3" Collar w/Side Mount Angle Bracket w/ Tamper & Ademco Key Switch
- 1.75" w x 7.5" h x 3" d
- Clear finish
- Requires optional Ademco Key Override Switch



Part # 100-00215

- 3" Surface Mount Collar w/ Side Mount Angle Bracket & Tamper Switch, ADA Button & Ademco Key-Switch
- Requires optional Narrow Style ADA Button & Ademco Key Switch
- 1.75" w x 12.94" h x 3" d



Part # 100-00117

- 1/4" Collar with Tamper for Insert Readers
- 4-13/16" H x 1.75" W x 1/4" D
- Finish: Clear
- Available in Black (Part# 100-00117B)



Use for lowest profile Mullion installation

Part # 100-00254

- 1/2" D Collar Adapter for Insert Readers
- MCR's w/Tamper Switch
- 1.75" w x 4.8" h x 0.25" d
- Available in Black (Part# 100-00254B)



Use for low profile Mullion installation

Part# 100-00122

- Aluminum Face Plate for Insert Readers
- Overall size: 4.5" w x 3.4 h x 0.125" d
- Available in Black (Part# 100-00122B)



Part# 100-00123

- Aluminum Face Plate for Insert Readers
- Overall size: 4.5" w x 3.4 h x 0.125" d
- Available in Black (Part# 100-00123B)



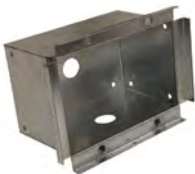
Part# 100-00124

- Aluminum Face Plate for Insert Readers
- Overall size: 4.5" w x 3.4 h x 0.125" d
- Available in Black (Part# 100-00124B)



Part# 100-00029

- Flush Mount Back Box
- Overall size: 5" h x 7" w
- Galvanized Steel



Part# 100-00250

- Surface Enclosure for Part# 101-00024
- Overall size: 5" h x 7" w
- In-Wall Mount Kit for solid wall surfaces for SkimGard™ and ACS-1E MCR's, ademco or Mortise Keyswitch



Part# 101-00017

- Wall Mount Collar W/Tamper Switch for Insert Readers
- Supports Ademco Keyswitch
- Faceplate: 5.4375" h x 7.375" w
- Material: -Galvanized Steel Back Box -Clear Anodized Aluminum Faceplate



*Does not include Insert Reader or Ademco Keyswitch

Part# 101-00018

- Wall Mount Collar for Insert Readers
- Faceplate: 5.4375" h x 7.375" w
- Material: -Galvanized Steel Back Box -Clear Anodized Aluminum Faceplate



*Does not include Insert Reader

Part# 101-00019

- ACS Wall Mount Collar W/ Mortise Key Switch for Insert Readers
- Faceplate: 5.4375" h x 7.375" w
- Material: - Galvanized Steel Back Box - Clear Anodized Aluminum Faceplate



*Does not include Insert Reader or Mortise Key-Switch

Part# 101-00014

- Conduit - Aluminum 36" L x 7" w x 1.75" h for SkimGard™ & ACS-1E Insert Reader relocation
- Requires 3" Collar Part# 101-00018)
- Clear



Part# 100-00120B

- 9" w X 1.75" h x 0.125" d x 3.175 d mm Collar Adaptor
- Available in Black (Part# 100-00120B)



Part# 100-00121

- 9" w X 1-3/4" h x 1/8" d x 3.175 d mm Collar Offset Adaptor



Part# 101-00124B

- 5" h X 7" w x 1/8" d Collar Adaptor
- Available in Black (Part# 101-00124B)








Part# 100-00117

- 1/4" Anti-Tamper Collar-16
- 4.8" w x 1.75" h x 0.25" d
- Available in Black (Part# 100-00117B)



ATM Lobby Card Access Control

<p>Part# 100-00125</p> <ul style="list-style-type: none"> Aluminum Face Plate for Insert Readers Overall size: 4.5" w x 12" h 	<p>Part# 100-00261</p> <ul style="list-style-type: none"> Wedge 22° Angle (Supports Collar Part# 100-00099) Overall size: 11.125" w x 2" h x 1" d 	<p>Part# 100-00262</p> <ul style="list-style-type: none"> Wedge 22° Angle (Supports Collar Part# 100-00099) Overall size: 13.35" h x 2" w x 1" d 	<p>Part# 100-00229</p> <ul style="list-style-type: none"> 1/4" Collar w/Tamper Switch, Medeco & Handicap Opening for Insert Readers Finish Clear Overall size: 11.875" h x 1.75" w x .25" d 	<p>Part# 101-00030</p> <ul style="list-style-type: none"> 4" w x 10" h for Reader w/Ademco Switch Mtg Plate/Collar 
--	---	--	---	--

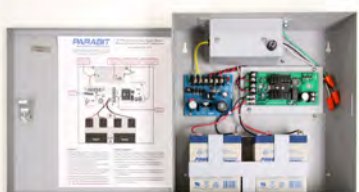

Thru Glass Collars with Vertical Interior Post

<p>Part# 101-00041</p> <ul style="list-style-type: none"> Thru The Glass Collar W/Tamper Switch for Insert Readers -Supports Ademco Keyswitch Faceplate: 8" w x 6" h Material: <ul style="list-style-type: none"> -Galvanized Steel Back Box -Clear Anodized Aluminum Faceplate <p><small>*Does not include Insert Reader or Ademco Keyswitch</small></p> 	<p>Part# 101-00040</p> <ul style="list-style-type: none"> Thru The Glass Collar for Insert Readers Faceplate: 8" w x 6" h Material: <ul style="list-style-type: none"> -Galvanized Steel Back Box -Clear Anodized Aluminum Faceplate <p><small>*Does not include Insert Reader</small></p> 	<p>Part# 101-00042</p> <ul style="list-style-type: none"> Thru The Glass Collar W/Mortise Key Switch for Insert Readers Faceplate: 8" w x 6" h Material: <ul style="list-style-type: none"> - Galvanized Steel Back Box - Clear Anodized Aluminum Faceplate <p><small>*Does not include Insert Reader or Mortise Key-Switch</small></p> 
---	--	--

Exterior Stainless Steel Post w/Face Plate Options

<p>Part# 101-00028</p> <ul style="list-style-type: none"> Brushed Stainless Steel Post w/ Tamper Switch & Stainless Steel U Base Mount for Insert Readers Mounting Plate w/ & w/o Optional Key-Override Switch/Handicap Button Overall size: 48" H x 5" W x 5" D Requires selection of Aluminum 4.5" W x 12" H Faceplate - See Following Options A, B or C 	<p>Part # 101-00028-A</p> <ul style="list-style-type: none"> Aluminum Face Plate for Insert Readers Overall size: 4.5" x 12" 	<p>Part # 101-00028-B</p> <ul style="list-style-type: none"> Aluminum Face Plate for Insert Readers and Key-Switch (Accommodates Ademco or 31.75mm Mortise Key-Switch) Overall size: 4.5" x 12" 	<p>Part # 101-00028-C</p> <ul style="list-style-type: none"> Aluminum Face Plate for Insert Readers, (Ademco or 31.75mm Mortise) Key-Switch and (Narrow Style) Handicap Push Button Overall size: 4.5" x 12" 
--	---	--	---

Power Supply Options:

<p>ACS-1E Panel Power Supply Part # 200-10175</p> <ul style="list-style-type: none"> ACS-1E 9VDC Battery (2 - 4.5AH) Backed Power Supply - for Hardwired Installations Provides 6 Hours of Battery Backed Operation <p>Options</p> <ul style="list-style-type: none"> 10ft. Soft Cord Part # 500-10014 	<p>ACS-1E panel + 12VDC Door Lock/Exit Hardware Power Supply Part# 200-10174</p> <ul style="list-style-type: none"> ACS-1E 9VDC & 12VDC Battery (3 - 5AH) Backed Power Supply - for Hardwired Installations Provides 6 Hours of Battery Backed Operation <p>Options</p> <ul style="list-style-type: none"> 10ft. Soft Cord Part # 500-10014 
--	---



ACS Enterprise Software Convenience at the Click of a Mouse!

From a single PC or multiple PC's within your LAN/WAN, ACS Enterprise supports the remote management and configuration of our ACS-1E ATM Lobby Card Entry Access Control Systems. The ATM Security of your ATM Lobby Door Access Systems across the globe can now be controlled and monitored by one Enterprise solution. Remote configuration changes, schedule updates and system diagnostics may be performed over Ethernet or Modem. Access System activity and PCI compliant Card Used Audit Trails as well as Enterprise system user activity logs are retained in a central SQL Database supporting simple investigation of database changes, controller downloads / uploads, and card activity.

ACS-1E controllers can be remotely updated daily, weekly, monthly, annually and on demand, in scheduled batch mode(s) by the ACS Enterprise upload/download batch initialization scheduler feature.

The ACS Enterprise software performs the function of remotely managing and programming the ACS-1E Control Panels. This software communicates over TCP/IP via a fixed IP address, port and Gateway or dial-up modem. Detailed log of activities are stored within the data base for long term internal investigation.

Part# 200-50005

ACS Enterprise - Multi-User Multi-Site ACS Configuration / Database Management /

Requires SQL 2008, 2008 R2, 2012 or 2014 Standard x64 (Not Included).

Part# 200-50007

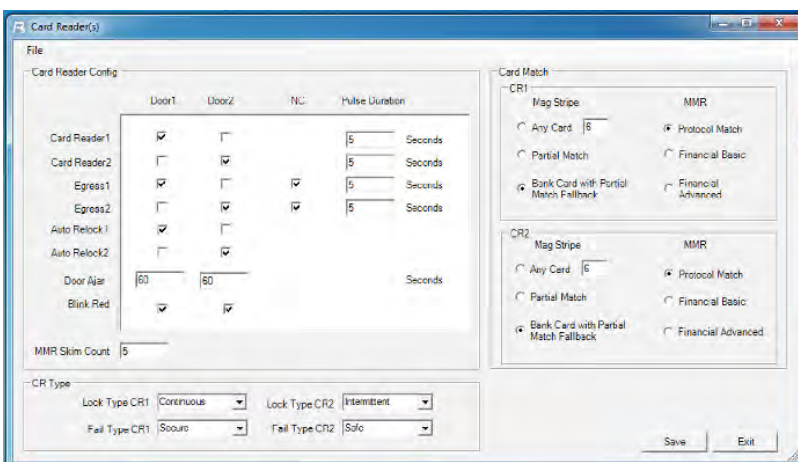
ACS Enterprise - Required For Field Technicians

Configuration / Diagnostic Software - SQL Lite required and Included on CD 32 and 64 bit versions.

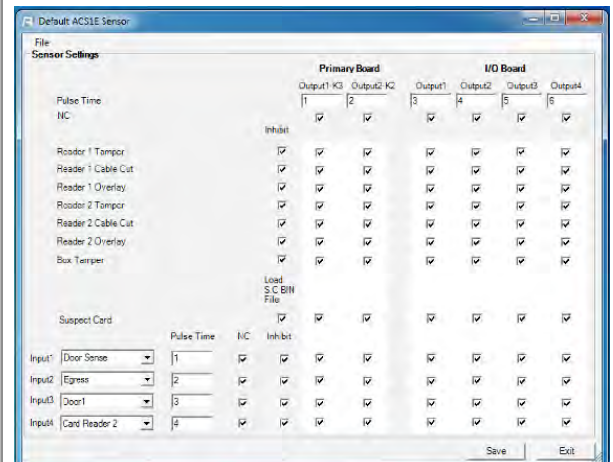
Includes CAT5 (Crossover Cable), Serial Cabels, Dongle and CDs.

ACS Enterprise Features

- Configure scheduled batch mode weekly or monthly functions
- Perform remote configuration/override features to support field service
- Check status of Inputs/Outputs
- View/Print/Export Reports or Database Lists
- View ACS Enterprise User Activity log to investigate changes made within the database
- Direct Connect to an ACS-1E panel to:
- Check Card Audit Trail to verify if Card Reader is functioning
- Update a Schedule, Configuration Settings or upload a Bin Table
- Lockdown a Site



The ACS Site Management screen contains controller configuration settings and connection history for each controller at a location. A scrolling list of sites is located along the left side of the site screen allowing quick and easy access to any location.



The ACS I/O Configuration screen contains; Egress, Door Contact, Expansion I/O, and Input to output integration settings. For example; an Exit Button wired to input 1 is pressed the door that is connected to output relay 2 unlocks and egresses for 5 seconds.

SOFTWARE MANAGEMENT

Audit Trail-Firmware Version-Health Check (AFH) Service Software

Part# 200-50013

AFH Service Software

Retrieves Audit Trail Data, Verifies Authorized Firmware Versions and Perform Health Checks on ACS-2 and ACS-1E Panels and Records Data Retrieved to the ACS Enterprise .

Part# 200-50013-SA

AFH Service Software License Annual Software Assurance 24-7.

Requires access to running license of ACS Enterprise - Multi-User -RTS (Three (3) Year Minimum Support Contract Term).

The AFH Service Software performs here (3) basic functions:

Each installed AFH Service continuously upon a daily interval setting connects:

1. Collects and stores within the ACS Enterprise SQL database all panel Audit Trail events. The AFH Service Load Balancing feature collects high event controllers more frequently than lower event panels.
2. Verifies approved controller firmware versions operating within ACS-1E and ACS-2 panels.
3. Checks the Health of the Card Readers by reporting exceeding the specified percentage drop in average daily cards read.

Equip your Central Station with Parabit's AFH Service Software. Each AFH Service reliably monitors hundreds of ACS panels simultaneously with no proprietary hardware required.

Each operating AFH Service:

- Supervises up to 2,000 ACS panels
- Can be loaded as a primary, backup or load balancing monitoring service
- Provides logging of all outbound AFH Service functions performed and messages transmitted to third party central monitoring message receivers.

TCP/IP communications protocol will be used between each AFH Service and the ACS-1E & ACS-2 panels.

The IP address allocation is based upon a fixed IP address, Port, and Gateway within the ACS-1E -ACS-2 panels.

AFH Service Features:

- Over 100 simultaneous IP sessions (over 2,000 active ACS-1E/ACS-2 panels) on each installed AFH Service, scalable in 2,000 IP simultaneous session increments. The number of simultaneous sessions is scalable and dependent upon the server's hardware
- Extremely low band-width
- Communication protocol: ACS-1E – ACS-2 Native
- Service Configuration and Supervision Managed within ACS Enterprise
- AFH Service Setup/Configuration Installation Utility
- ACS Enterprise provides reporting on Retrieved and Transmitted Events for each installed AFH Service and each ACS-1E/ACS-2 panel
- Annual Software Assurance



CENTRALIZED SOFTWARE MANAGEMENT

AXSView Software ACS-1E Message Transceiver Service

Part# 200-50008

AXSView Transceiver Service Software

Receives and Forwards ACS-1E Panel Status Messages to the ACS Enterprise and 3rd Party Alarm Message Monitoring Software

Part# 200-50008-SA

AXSView Transceiver Service Software License Annual Software Assurance 24/7

Requires access to running license of ACS Enterprise - Multi-User -RTS (Three (3) Year Minimum Support Contract Term)

The AXSView Service Software performs three (3) basic functions:

1. Receives hundreds of ACS-1E Status Messages simultaneously with no proprietary hardware required.
2. Forwards received ACS-1E Status Messages to third party IP based Central Monitoring systems; UTC's MASTermind Monitoring Software (MASrcv Version 4.2.44 minimum and MASTerMind Monitoring Version 6.36.02 Build 2) and other solutions as requested.
3. Full inbound and outbound logging of ACS-1E status messages.

Equip your Central Station with AXSView, Parabit's ACS-1E Status Message Transceiver Service. Each AXSView Service reliably monitors hundreds of ACS-1E panels simultaneously with no proprietary hardware required.

Each operating AXSView Service:

- Supervises up to 2,000 ACS-1E panels.
- Can be loaded as a primary, backup or load balancing receiver
- Provides logging of all inbound and outbound AXSView Service functions performed and messages received and transmitted to third party central monitoring message receivers.

TCP/IP secured communications protocol is used between the ACS-1E panels, AXSView Service Software, and your central monitoring message receivers

The IP address allocation is based on a fixed IP in the ACS-1E panel, fixed IP within the AXSView Service and a fixed IP within the central monitoring message receivers.

AXSView Service Features:

- Offers both a workstation and / or server Windows service solution
- Over 100 simultaneous IP sessions (over 2,000 active ACS-1E panels) on each installed AXSView Service, scalable in 2,000 IP simultaneous session increments. The number of simultaneous sessions is scalable and dependent upon the server's hardware
- Extremely low band-width
- Communication protocol: ACS-1E Native
- Service Configuration and Supervision Managed within ACS Enterprise
- AXSView Service Setup/Configuration Installation Utility
- ACS Enterprise provides reporting on Received and Transmitted Events for each installed AXSView Service and each ACS-1E panel
- ACS-1E incoming status events buffer
- Annual Software Assurance



Parabit Systems products are synonymous with innovation, durability and reliability. Made by expert craftsmen with highest grade vandal-resistant materials in our Long Island NY state-of-the-art facility, Parabit products consistently outperform the competition in public deployments. Experience the quality of Parabit.